



# Accents

March 2019

[mlaccents910@hotmail.com](mailto:mlaccents910@hotmail.com)



## Director's Corner

*President – Rick Hull*

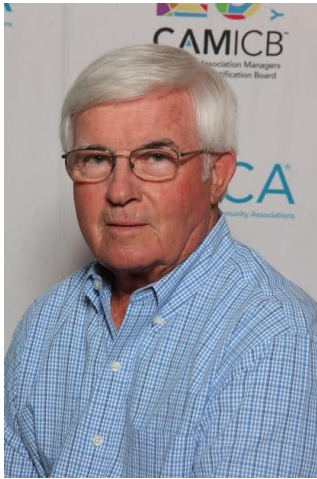
Congratulations to our three newly elected Directors, Tim Redmond, Mike Smith and Ray LeClair. I also want to thank Lois Davidson for her candidacy. I as well as this community greatly appreciate all residents who put themselves forward in an effort to make a difference and be of service to the residents and the corporation. Your new Board of Directors are energized and ready to put forth their input and fresh ideas. Wish them well.

I want to thank our outgoing board members. Donna Sheppard, served six years. Jeff Stapledon, served three years. Frank Phillips, served three years. All these individuals have worked tirelessly and are deserving of our thanks for their time and contributions to this community. It has been my pleasure to work with them and I hope they enjoy their new-found free time, they deserve it.

Thanks to the Election Committee and Chairman Link Hersey for the time and effort put forth during the election process. There are many mailings to get out, the setting up of everything in preparation for the Candidates Night, preparing ballots and of course the important counting of ballots. Thanks again for doing a great job.

I wish to thank my fellow directors for once again trusting me to be their President, a position I do not take lightly. I congratulate our new Vice President, Gary Kobel, Vice President Activities, Mike Smith, Secretary, Martin Smyth and Treasurer, Karen Hamilton. The duties and committee assignments of all the directors will be announced soon.

As your Board of Directors, we are anxious to get to work and with the hiring soon of a new General Manager we are looking forward to moving ahead into the future.



## General Manager

*John Bradley*

This season is passing by very quickly. It is hard to believe that it is March and peak season will be complete in another month. Some of the following topics may be of interest to you. A more detailed update is provided at the monthly homeowner's meeting on the first Monday of each month.

**BOARD OF DIRECTORS.** Congratulations to the outgoing Directors; Donna Sheppard, Jeff Stapledon, and Frank Phillips. Thanks for all your efforts to make Maple Leaf an even better community and thanks for your support of the staff. Congratulations to the new directors.

**2019 HURRICANE SEASON.** Please don't be complacent because in 2018 Hurricane Michael, a devastating major hurricane, struck the Florida Panhandle and not the Southwest Gulf Coast of Florida. In 2017 we were fortunate that Hurricane Irma was weak when it reached Charlotte County. There were no major hurricanes on the Florida Peninsula during 2016, 2015, 2014, 2013, 2012, 2011, 2010, 2009, 2008, 2007 and 2006. In 2004 Maple Leaf was almost destroyed by Hurricane Charley. The possibility always exists that there will be a hurricane that causes significant damage. We must all be prepared, whether you are here all year long or you are a snowbird. Please insure that all loose material on your lot and outside your home is properly secured by the beginning of May. This includes lanai furniture in screen rooms (screens are not protection and furniture should be placed inside the home), garden hoses, lumber, loose paver blocks/bricks, barbeque grills, etc. This is very important – secure your loose property prior to departing. Those living here all year long should certainly have an evacuation plan as well as appropriate supplies in your home. More briefings and information will be provided in the coming months for those residents residing here during the forecast hurricane season. If Charlotte County orders a mandatory evacuation of mobile home parks, then the clubhouses will not be available for use. Have a plan for evacuation.

**SEVERE WEATHER NOTIFICATION.** March can sometimes bring severe weather like tornados. There is always the possibility of tornado watches and warnings. Although this is a frequent occasion during the summer, it is not during the winter and may be worrisome to some snowbird residents. The best warning is to have an app on your cell phone that will alert you or to have a weather alert radio. The radios are available at Walmart, Best Buy, and other stores. The cost is inexpensive – generally between \$15 and \$40. The CanAm and Queensway Clubhouses remain open during the night during severe weather alerts.

**FLAG PROTOCOL.** There are numerous times when the U.S. Flag must be lowered to half-staff for set dates such as Memorial Day, Patriot Day (9/11), Pearl Harbor Remembrance Day, death of an ex-President (recently H. W. Bush), death of a Supreme Court Justice, etc. Only the President or a Governor can order the U.S. Flag to be lowered to half-staff for other dates not set in the U.S. Flag Code, established by the U.S. Congress. Some of our Canadian homeowners have questioned why we take the Canadian Flag down. The U.S. Flag Code states that flags of nations will be flown in the United States on separate staffs, at the same height, and are of relatively the same size. If the Canadian Government does not state that the Canadian Flag will be flown at half-staff at the same time as the U.S. Flag, then we must take down the Canadian Flag until the U.S. Flag is raised to full-staff.

*GUESTS IN THE PARK.* Spring Break and the Easter holidays bring many visitors and guests to the community. Please insure your guests are aware of the rules. Some specifics are:

- An adult shall supervise the activities and behavior of a child.
  - No child under the age of 12 can ride a bicycle or tricycle on a Park street unless accompanied by an adult.
  - Children under the age of 12 must use the Kiddie Pool.
  - No child under the age of 18 can use any sauna, whirlpool bath, fitness center, or billiard room.
  - No child under the age of 16 is permitted to drive or steer a golf cart either alone or with an adult.
- A golf cart is considered a motor vehicle.

*LOT CARE THROUGHOUT THE YEAR.* Most homeowners have done so much to improve their lots. Remember that what you planted or will plant will grow four times as fast during the months of May through October due to the heat and humidity. Snowbirds need to prepare now for the care of your lot and plantings during your absence. We strongly recommend that you do not pay whoever cares for your lot in advance – pay after the work is done. We have witnessed many instances of homeowners receiving a lot violation notice when they thought someone was caring for their lot on a scheduled basis only to find out the contractor/handyman was not going to clean-up your lot until just prior to your return in October or November. If you do not have anyone caring for your lot, we suggest chemical weed control and we have information available in the Park Office. It is very important that the Park looks just as good during the summer as it does during peak season. The community standards must be maintained all year, whether you are here or not. The Corporation only does the lawn mowing, trimming, and edging.

*HOME MODIFICATIONS.* Any exterior modifications, including painting and landscaping, must be permitted by the Park Office in accordance with the Rules & Regulations, the Bylaws, and the Home Modification Policy. Park permits do not preclude the necessity for a County permit.

*GOLF COURSE & PRO SHOP.* We have the significant number of 491 members for our new golf course this season. We hope you are enjoying the course. This year's membership ends on September 30<sup>th</sup>. Membership applications, for the season beginning October 1<sup>st</sup>, will be in the Corporate mailing this summer. Your Pro Shop has a great selection of apparel and other items.

*COUNTRY CLUB DINNERS AND EVENTS.* St. Patrick's Day, March 17, is just a few weeks away. There will be a parade followed by a party in the Country Club. There will be Irish music, sing alongs, green beer, specialty drinks, and an available deli-style piled high corned beef on rye sandwich with chips. Note that St. Patrick's Day is on a Sunday this year and the events are a little earlier. Look for special buffets, Thursday Wings Nights with entertainment, and much more in your club until the end of season. Did you know that you can schedule anniversary, birthday, and other events in your Country Club?

*SALES OFFICE.* There has been a lot of activity. We have three very experienced sales associates for your real estate needs.

*SPACE REQUISITIONS.* They should already have been submitted for the 2019-2020 season. Allocations are based on best use of the facilities and not the date you submitted the requisition. Please pick-up your approvals prior to departure.

*LOST AND FOUND.* Numerous articles of clothing, eye glasses, keys, etc. are in the Park Office. We will donate articles to charity if not claimed by the end of season.

*CLOSING YOUR MANUFACTURED HOME.* You may find the checklist in this edition of Accents helpful when you close-up your home at the end of season.

Many of you will depart in late March or early April. The staff wishes that everyone has a great and healthy summer. You can be assured that we will do the utmost to continue to improve the Park and prepare for an even better next season. Thanks to the volunteers who do so much for this great community.



## Golf and Grounds Superintendent

*Christopher Spence*

### Golf

Over the last month we have had some great weather and the course is really enjoying it! We do have some beat up areas, this is due to the extensive play over the last few months. The new finishing touches to the golf course are now out, these are great additions and are very aesthetically pleasing. I want to personally thank the Golf Association for the \$10,000 donation which helped in purchasing these items.

Unfortunately, we have noticed a lot of cigarette butts all over the golf course recently. Disposing of butts on the ground not only makes the course look bad but it's also littering, bad for the environment, bad for the mowers, and most dangerously has the potential to start wild fires which currently when it is so dry, is a very likely outcome. We ask if you have a cart to purchase a cup holder ash tray that fits and empty it at the end of the round or if you walk dispose of them into a cup of sand or keep them in a packet till you reach a trash can. Your cooperation in this matter is greatly appreciated.

### Grounds

This month we planted some new plants behind the Can-Am thanks to the Garden Club. We appreciate their continued support and donations in making the park even more beautiful. Just as a reminder to all residents and for those who will be leaving us over the next few months, we will be trimming palm tree around your homes over the summer. If you have any statues or important items in the beds near or around the palm trees, please have them moved to a safe location before you leave so there is no chance of them being damaged when tree trimming commences.

We have had a few residents bring their garden waste down to maintenance. The proper procedure is for Waste Management to remove residents garden waste. Please do not leave at maintenance as this incurs additional unbudgeted fees for the Golf Course.

As always make sure if you need any assistance with irrigation to please send a work order request into the main office.

### Staffing

On February 1<sup>st</sup> we received the sad news of the passing of Scott Smith, an employee of Maple Leaf for 34 years. We are thankful to Scott for his many years of service and dedication to the park. He will be deeply missed and our thoughts and prayers are with his family through this difficult time. We will be planting a memorial tree for Scott between 5 and 7 in appreciation for him being a great part of the Maple Leaf family. Thank You Scotty for everything.

Bobby Fernandez, our head mechanic, will be out for a period as he is having shoulder surgery. We wish him a speedy recovery and hopefully he can get back to us as soon as he can and with a clean bill of health. In the absence of Bobby, our two irrigation techs will shoulder some of the work that needs to be done to keep equipment in good order. Mike and Paul have good mechanical knowledge and are great assets to our team. This does mean that some of their time will be taken away from performing their general duties in the park, so we just ask for patience with work orders through this time until we get Bobby back; thank you.

#### Lawn Bowling

The new lawn bowling green has had a lot of play this season and every time I go passed there it is always packed; which is great for the lawn bowling club. You may have noticed, as you have been playing, the perimeter of the green is getting very beat up and worn. To this end, I encourage if you are not playing your turn to stand up on the concreted areas to prevent some of this wear and tear.

#### Lawn Maintenance

There will be one cut scheduled for March.



### **Message From The Pro Shop**

*Nathan Wilson – Golf Professional*

#### **Did You Know?**

What is a “Crossover” tee schedule? Here at Maple Leaf on Monday, Friday & Saturday, we run what we call “Crossover” days. That is when we start a group on hole #1 & hole #10 at the same time. For example, 7:00am off #1 and 7:00am off #10. We send off golfers from 7:00am – 8:42am. The tees then close from 8:43am – 10:35am, so golfers that start on #1 can go to #10, and golfers that started on #10 can go to #1. The tee then re-opens so golfers can tee off from 10:36am – 12:12pm and then closes from 12:13pm – 2:11pm so golfers can crossover. And the final

“wave” of tee times runs from 2:12pm – 3:48pm and then closes for the rest of the day after that.

On all other days at Maple Leaf we run tee times starting on #1 all day. Tuesday is reserved for Ladies Day in the morning, Wednesday is reserved for Men’s Day in the morning & Thursday is reserved for Mixed League in the morning. All leagues can be joined by a golfing member for a very small fee.

With all that said, a few very big THANK YOU’S need to go out. The first is to our ML Golf staff. Crossover days are hectic to say the least and our staff does a fantastic job! From checking in all those golfers coming in to the Golf Shop at the same time, to the Rangers/Starters for juggling golfers that are coming from all directions, literally. Thank you!

The next is to our Golf Course Maintenance Staff. To put things into perspective, when a golf course starts off #1 all day, it takes a lot of pressure off the staff to change all of the hole locations from the previous day, all of the tee markers, mow tees and greens, run water and too many other things to list. Just trust me it’s a lot! Now start groups off #1 and #10. You can imagine the added pressure. Chris Spence, John Carpenter and the rest of the crew are some of the best I’ve seen! Thank you!

### **Merchandise**

All golf shoes are 20% off!

Maple Leaf logoed Tervis Tumbler 4 packs are now 15% off!

### **Men's, Ladies & Mixed League Money Leaders As Of 2/22/19**

18 Hole Men (1) Cecil Mendel \$127.00 (2) Ron Keyes \$120.00 (3) Brian Herod \$106.00

9 Hole Men (1) John McCormick \$40.00 (2) John Machiski \$25.00 (3) Don Kauffman \$23.00

18 Hole Ladies (1) Nancy Mills \$39.00 (Tied 2) Sharon Keyes \$22.00 (Tied 2) Joan Dean \$22.00

9 Hole Ladies (1) Mary Harris \$25.00 (2) Betty Alexander \$22.00 (3) Judy Simser \$20.00

Mixed League (1) Colleen Gallagher \$23.00 (Tied 2) Gwen Davey \$21.00 (Tied 2) Rick Oliver \$21.00

### **Twilight Golf**

Lastly, our Twilight fee starts at 3:00pm daily and is only \$20.00 for Male Leaf Residents and that includes tax and golf cart! Just remember that on Crossover days the tee close at 3:48pm so call early! ML Residents now get 6 days in advance to book instead of the previous 3 days! How sweet is that?!

### **Merchandise**

All golf shoes are 25% off!

Maple Leaf logoed Tervis Tumbler 4 packs are now 15% off!

### **Men's, Ladies & Mixed League Money Leaders As Of 2/21/19**

18 Hole Men (1) Cecil Mendel \$127.00 (2) Ron Keyes \$120.00 (3) Brian Herod \$106.00

9 Hole Men (1) John McCormick \$40.00 (2) John Machiski \$25.00 (3) Don Kauffman \$23.00

18 Hole Ladies (1) Nancy Mills \$39.00 (Tied 2) Sharon Keyes \$22.00 (Tied 2) Joan Dean \$22.00

9 Hole Ladies (1) Mary Harris \$25.00 (2) Betty Alexander \$22.00 (3) Judy Simser \$20.00

Mixed League (1) Colleen Gallagher \$23.00 (Tied 2) Gwen Davey \$21.00 (Tied 2) Rick Oliver \$21.00

## **Shuffleboard Club**

*Joan McCauley*

The shuffleboard club held its annual Presidents Cup Doubles Tournament on the weekend of February 2nd and 3rd. There was a barbeque held for lunch on the Saturday in between games. This year the tournament champions were Kathy Smith and Werner Eichberg beating out Judie Adam and Jay McCauley. In the consolation round Dale Houghton and Lydia McGhee were the winners and Ada Gardner and Don MacArthur were the runner ups.

Our Singles Tournament will be held on Saturday March 2 at the Queensway courts. Singles meaning that you play alone with no partner. There will be a signup sheet available the week before at the Queensway court and this tournament is limited to the first 32 members to sign up. Lunch will be provided between games. Play will start at 9:30 am and please arrive 10 minutes early to draw for courts. If you sign up and you have to back out for any reason, please remove your name from the sheet and if the signup sheet has already been collected please contact Werner Eichberg 941-391-6324 so we can assure we have 32 players available.

Another upcoming events to mark on your calendars will be the Party on the Deck on Sunday March 10 at 2 pm. All members are welcome. Please bring a dish to share and BYOB. Last year's event was a big success.

Our annual AGM meeting will be held on Sunday March 17th at the CanAm at 11 am. Lunch will be provided. Please bring your membership card to get in. Signup sheets will be at the courts the week before. Last chance to meet with all our members before the end of the season.

Please watch channel 195 for any changes or updates on these events.

## Ladies Golf League

*Muriel Mischook, Vice Captain*

The **Ladies Invitational, "Diamonds in the Rough"**, was a huge success with 104 players from Maple Leaf and 7 outside golf clubs. A very special thank-you to **Betty Staples** and her organizing committee who, for the last **7 years**, has been organizing this very popular event! Many thanks, as well, to all our ML players who provided donations for the breakfast buffet and our helpful "chauffeurs". Congratulations to the **first place** Scramble team winners **Marg MacDougall, Burnt Store, Donna Wallace, Deep Creek, Blanche Lawrence, ML & Norma SeEVERS, ML**; Closest to the Pin #2 **Marilyn Ankenmann, ML & Dodie Russell, Port Charlotte**; Closest to the Pin #14 **Shirley MacDonald, ML & Mary Woodrum, Deep Creek**; Closest to the Line **Rae Anne Swan, Deep Creek**; Longest Drive **Lanell Burgsteden, ML**. See you all back next year when **Nicole Goddu** will take over as the new Invitational Chairperson.

The Ladies League also "put a shine on" a caravan of golf carts during our **Cart Wash Fundraiser**. Thank-you to **Barb Peterson** for organizing this event, **Debbie Bowe** for creating the nifty sandwich boards, our Ladies League volunteer scrubbers and to all the now clean golf cart owners who supported this event with their donations!

To be noted, the Ladies Golf League made a recent generous donation of \$500 to the Maple Leaf Corporation towards the purchase of a new **golf club washer**

Our last **Shot Gun Scramble, luncheon and AGM** will be on **Tues. March 19** at which time we will announce the proposed Executive for next year. Sadly, our **last day of league play** will be on **Tues. March 26** but it will be a **"Fun Day"**!

We hope everyone has enjoyed their golf season this year. Please let your executive know of any questions or suggestions for next year.



## Maple Leaf History

*Tom Kanigan*

The History Project continues to make good progress. So far, we've written most of the Maple Leaf history, over 20 pioneer stories, and about 20 club histories. A team of editors is reviewing material to ensure consistent quality. Editing will continue throughout the summer, and the book should be available early in 2020.

Our aim is to sell the book to residents for about \$15. To do this, we are seeking funding support from various sources, including Maple Leaf clubs, the Flea Market and the Corporation. Some clubs have already made contributions, and more is expected.

Our Name the Book contest concluded January 30, and the title chosen is **Welcome Home – The Maple Leaf Story**, based on entries submitted by Sharon Poland and Jean Gerber, both of whom have been awarded a free book.

On Saturday, February 23, we hosted a Maple Leaf History Trivia event in the Country Club. This was a fun experience for all, and participants learned about Maple Leaf's fascinating history. It included musical entertainment as well as an opportunity to buy drinks at the bar and hot dogs or hamburgers. Winners of each round of questions won fun prizes, and the overall winners each won a 50% discount on the purchase of our book. We have announced the overall winners on Channel 195.

We are dedicating the book to the 1990 Board of Directors and the canvassers who made the acquisition of Maple Leaf by its residents happen. Without their determination, Maple Leaf would not be the wonderful community it is today. Only one of the six Canvass Captains, Bill Bowles, remains in the Park, and we have awarded Bill a free book, in recognition of the tremendous achievement of the 1990 Campaign Canvassers.

Some former residents of Maple Leaf may want a copy of the book as an excellent remembrance of the happy times they spent in the Park. We plan to contact these people to offer them the chance to purchase a book. To do that, we need names and addresses (both postal and email). You can assist by providing this information to me (tomkanigan1@gmail.com) for those departed residents you know. Your help would be much appreciated.

## Entertainment Committee

*Pat & Miles McEvoy*

In March we have lots of entertainment for you. Apart from regular Thursday night Wings & Things there will be extra events this month. Thursday evenings are FREE with tips only for the entertainers.

We are trying out something new on a Thursday night. From 4pm to 5 pm Naida is going to teach everyone a new line dance. You can come and watch or join in.

Listed below are the evenings we have booked for the Country Club for the month of March

Thursday 7<sup>th</sup> March MARDI GRAS IN THE PARK instead of the CC evening come to see NICK D & ROBERT & WOLFIE. 2 pm to 7 pm. It is outside around the deck. \$5 entry fee. Bring your own food & drink. Lots of dancing and good music. Bring your own chairs. The Sand bar will be selling hot dogs and burgers. If the weather is bad it will be inside the CC. Mardi Gras beads will be on sale at various events. Don't miss this great afternoon.



Thursday 14<sup>th</sup> March BRETT BAKER our favourite cowboy is back. Don't miss this evening as it is the last visit this season.

ST PATRICKS DAY March 17<sup>th</sup> There will be the usual parade then IRISH MARTIN will be playing for tips in the Country Club from 1 pm til 3 pm.

Thursday 21<sup>st</sup> March TWO OF A KIND Welcome back these 2 entertaining men. They were very popular earlier in the season.

SATURDAY 23<sup>RD</sup> MARCH Buffet & entertainment JERRY CONNOLLY. A big hit here is Maple Leaf for years. Tickets will be on sale for the buffet so watch out for the details on 195.

Thursday 28<sup>th</sup> March DIVERSITY Our very own in-house band. Welcome back again another year.

## Golf Dinner Dance

The annual dinner dance will be Saturday March 9th at the Queensway. Doors open at 5:00, appetizer's @ 5:30, buffet dinner @ 6:30. Members & spouses \$35, non-members \$37. For information and tickets contact Sharon McDonald

## Pickleball

*Tom Kanigan, Past President*

Our membership continues to grow, and we are already close to 200 members, proving once again that Pickle Ball is as popular in Maple Leaf as everywhere.

The new format for Team League play Saturdays is working well and will be used next season. The Mixed Ladder, played every Monday, remains a popular success and will be reinstated in 2019-20. The new Ladies Ladder has also been a success and will continue.

On FUNDAY FRIDAY, January 25, we had our second FUN tournament, enjoyed by 48 players. This huge success was followed by a BBQ at the courts. The winners of this tournament were  
Rick Latimer, Advanced.

Richard Wood, Intermediate

Penny McDonald, Novice

The FUN tournament has proved to be quite popular and will be repeated next year.

Our Club Championship was held February 23 and 24 and proved to be fun for both players and spectators. This event was sponsored by Cathy Denault of Premium Pickleball and included a BBQ Saturday at the courts. The winners have been announced on the Club's website.

We have trained 80 Beginners this year and the Introduction to Pickleball will no longer be offered this season unless there is a demand. Novices continue to benefit from Supervised Play every Friday, and ball machine practice is available on the other court for Intermediate and Advanced players at the same time.

As members are aware, there have been some issues with the use of the washrooms in the Rampart building. Discussions between Joe Potter, Carol Hebert and John Bradley have produced a resolution. Pickleball

members are encouraged to use the washroom in the Library whenever possible. If necessary, members may access the Rampart bathrooms through the rear door, proceeding quietly, and not engaging in discussions with the instructor or students if a class is in progress.

Our AGM will be Monday, March 18, 1-3 PM in the Can Am building, followed by our last Social of the year. To nominate someone for next year's Executive, please submit the nomination to [tomkanigan1@gmail.com](mailto:tomkanigan1@gmail.com). Fall registration will be Saturday, November 9, 2019 on the CanAm Deck, starting at 2 PM, but members can register early at the March AGM. Fall registration will include a Welcome Back Social. Planning is underway for next year's schedule and activities so if anyone has suggestions, please send them to a member of the Executive. Until then, Happy Pickling!



## **Mardi Gras in the Park**

**Thursday, March 7, 2:00 – 7:00 pm**  
**Featuring Nick D and Robert & Wolfie on the Can-Am Deck**  
**Pay \$5 at the Gate**



### **Beads on sale, 3 for \$1**

**We will have Angus Burgers or Belly Buster Hot Dogs with Chips, Pickle and a Soda. Just \$7 (all in). Get your advance tickets at the Sandbar.**

**BBQ will be open from 2 to 4 pm.**

**BYOB and BYOC (Bring Your Own Chair)**

## **Mardi Gras Party in the Park**

*Sponsored by Maple Leaf Lawn Bowling Club*

Thursday 7<sup>th</sup> March 2019 we are holding a Mardi Gras Party in the Park. It will be in and around the deck. Entry fee is \$5 when you will be given a wristband allowing you to come and go all afternoon. The gates open at 1 pm the entertainment is on from 2pm to 7pm. Bring your own food, drink & chair for a full afternoon of music.

The Sand Bar will be at the party selling angus beef burgers/belly busters, chips, pickle and a canned soda for \$7 between 2pm & 4pm. Tickets for the food are also available beforehand from the Sandbar.

Mardi Gras beads will be on sale at the gate 3 for a \$1. They will also be available around the various events for the next couple of weeks.

This is the 1<sup>st</sup> Annual Mardi Gras with the most popular entertainers in the park. Everyone and their guests are welcome.

## **Merrymakers**

The annual Merrymakers variety show will be held on March 1,2,3 and 4 in the Country Club starting at 6:45 pm. Doors open at 6 pm. Tickets are \$20.00 each.

There are still tickets available and can be purchased by calling [941-787-5353](tel:941-787-5353).



## St. Patrick's Day at the Country Club



### Irish Martin



1:00 to 3:00 pm, Sun, Mar 17  
following the parade.



All your favorite  
Irish tunes!

Corned Beef  
Sandwiches

Free entertainment. Lots of Fun!  
Don't forget to tip the performer

## St. Patrick's Day March 17<sup>th</sup>, 2019

Get yourself prepared for one of the biggest and most fun events in the Park. There will be the biggest parade of cars, carts, and bikes that we have seen for a long time. Assemble at Veterans Park at 10:30 am for the parade start at 11:00 am. Everyone dressed up will be given a ticket for entry into the Country Club. Lots of costumes, lots of green decorations and a great day in the Country Club. There is no charge for entry. Put the date on your calendar. The Country Club will be closed until after the parade. All the people in the parade will get first choice of the seating in the Country Club. There will be 2 hours of live entertainment featuring IRISH MARTIN from Dublin. He will be on stage from 1:pm til 3:pm and is singing for tips only. The Sand Bar will be selling tickets in advance for Corned Beef sandwiches for \$8.

Pat McEvoy 624 6702



## Breakfast Specials at the Sandbar



Mon – Sat 7:00 am to 11:00 am  
Sunday 7:00 am to 12:00 noon  
Breakfast Specials every day and you  
get a free second cup of coffee!

Just \$5 plus tax and tip

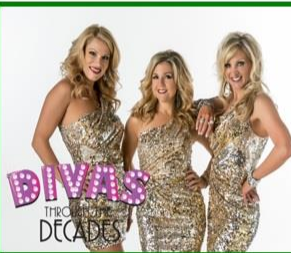
It's a great way to start your day!



## Celebrity Series 2018-19

### Divas Through the Decades

7:00 pm, Friday, March 8, 2019  
Country Club



#### Motown

- Ain't No Mountain High Enough
- Heat Wave
- My Girl
- Please Mr. Postman
- I heard it on the Grape Vine
- Where did our love go?
- I'll be there
- My guy

Tickets: \$20 per person, Maximum 4  
tickets per person.

Call 941-380-4817 for Ticket Sales

# March Movies

**Wednesday Night at the Movies**



## **I Can Only Imagine**

With Michael Finley and Dennis Quaid  
**Country Club**

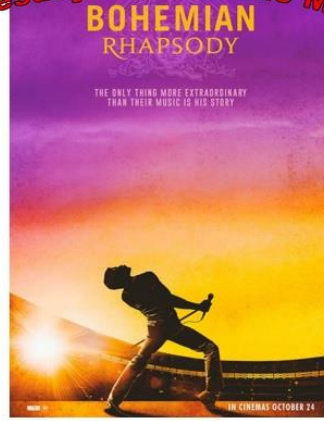
7:00 PM, Wednesday, March 6

Tickets \$4 per person at the door, Cash Bar

**Free Popcorn – Door Prizes**

Brats \$5, Hamburgs \$5, Hot Dogs \$4  
Doors Open 6:15 pm

**Wednesday Night at the Movies**



## **Bohemian Rhapsody**

with Rami Malek and Lucy Boynton

Country Club, 7:00 PM, Wednesday, March 13

Tickets \$4 per person at the door, Cash Bar

**Free Popcorn – Door Prizes**

Brats \$5 - Burgers \$5 – Hotdogs \$4

**Door Open 6:00 pm**

## **St. Patrick's Dance**

When: Saturday, March 16<sup>th</sup> – BYOB

Time: 7:30 – 11 pm

Where: Queensway

Entertainer: Verceal (formerly with the Platters)

Cost: Tickets: \$10 per person

Questions: Karen (585-469-7396) or 328 Queensway



## Travel Club

*Court & Eden Wells*

On Valentine's Day we had a very successful presentation by our Celebrity Cruise Line representative, Barbara. Her video illustrated what a fabulous cruise ship we will be sailing on in 2020, The Edge. Our cruise will take us to Key West, Grand Cayman Island & Mexico leaving Fort Lauderdale on February 2 nd.

For those who have booked our exciting trip to Branson Missouri, we will be holding a meeting on Thursday March 21 at the Can Am at 2 o'clock with further information. If you wish to add your name to our waiting list, please call All Aboard Travel at 800-741-1770 ext. 6409 & speak to Donna.

## Strawberry Festival Preparations

**What:** Hullers Needed,

**When:** Tuesday, March 12

**Where:** CanAm

**When:** 1 pm approx. 60 - 90 mins.

**What to Bring:** bring labelled crispers (do not use address labels as they are too small)

Bring - Small knife, medium bowl and a CRISPER (in good condition) from your fridge.

Crispers are so important to the success of our Strawberry Festival.

Crispers hold a lot of berries & when full we cover with plastic film for you to slide back into your fridge overnight.

You return it to the CanAm on Wednesday morning between 8 am -11 am.

To ensure there is no mix-up with crispers, we ask you to do this:

On a strip of masking tape or similar PRINT in LARGE letters your name, lot, street.

example: JANE DOE 123 Queensway

We greatly appreciate your help!

Generally, this task takes about 60-90 minutes in which we chat & socialize enjoying water & cookies.

Whether you play tennis or not, we are inviting You to help in this activity.

More information about Hulling Day will be forthcoming March on Channel 195 & Bulletin Boards.

## Strawberry Festival

Maple Leaf Strawberry Festival will be all around the CanAm facility, **Wed., March 13 from 2 - 4 pm.**

Sponsors will be on the front lawn of the CanAm, Important People! Please drop by & chat with them.

Feast on delicious, mouthwatering strawberry shortcake! Enjoy a wonderful relaxing afternoon with Family & Friends.

Dance to Music by "Diversity" or just enjoy listening.

"Me" The Magician & Face Painting by Lynn Jenkins to entertain adults & children with their delightful activities.

Pre-Sale Tickets \$ 5

Sat. **Feb 23** – Wed. **March 6** - Advance door-to-door ticket sales will take place.

Tickets day of event at the CanAm \$ 6.

Please make every effort to Purchase Tickets in Advance as the Purchase of Berries is Based on the Ticket Sales. Last minute tickets will be available "Day of" AT the CanAm Door for \$6 or contact Sharon Ayotte 215-433-3268. The Strawberry Festival is the Tennis Club's biggest fund raiser & together with our Club membership fees has helped us to donate substantial funds to the Corporation.

Much of these funds have been applied to maintenance, repair & upgrading of the tennis facilities, an amenity for all ML residents. We also donate yearly to various Clubs & Organizations within the Park.

### **SPONSORS**

We wish to give warm Thanks to the following local businesses who are Sponsoring our Event.  
Please drop by and chat with these Companies who are supporting our Fund Raising & Festival:

All Florida Weatherproofing and Construction Inc. - 1-877-572-1019  
A M S 1-800--522-3134  
Cart City 941-627-1669  
Harlan R. Domber Law Firm 941-923-9930  
Jose Flores, The Best of the Best Landscaping Services LLC 1-863-990-2395  
Lake Michigan Credit Union 941-258-3055  
Pest Eliminators 941-766-0902  
R & L Construction 941-815-0404  
Tommy Tie Downs LLC 941-628-6840  
Tri-County Air Conditioning and Heating 941-485-2222

### **SOMETHING NEW - RAFFLE**

**We are holding a Raffle during the Festival, CanAm, from 2 pm - 4 pm,**

You do not have to be present to win!

Winners will be contacted next day. ( Thursday ) .

\$1 - 1 ticket, \$2 - 3 tickets, \$5 - 10 tickets

We are very pleased to advise Local Merchants are supporting our event through the donation of numerous gift certificates.

Good luck in the Raffle and Please Thank

the Managers & Supervisors for their Generous Donations & Support when you attend their Business's.

If you enjoyed their Business, tell others!

(if you didn't, let me know, but I believe You will enjoy.)

Let's not be Shy, say, "We are from Maple Leaf Golf & Country Club"!

### **GIFT CERTIFICATES**

Mr. Marvin's Barber Shop, Pepper Burrito Company, Fin Sushi & Grill, Peters Restaurant,  
The Dolphin Dry Cleaners, Echelon Unisex Hair Stylists, Wrigleys, Visani's, Nail Tek, Smoke n Pit BBQ,  
Galaxy Nails, Desi Salon, Bowland Bowling, HEY, did someone say Pizza?

*Over 30 Gift Certificates to be drawn in Raffle. Is this going to be your lucky Day?*

Please watch Channel 195 for updates.

Don't have cable? Stay in the Know - Go To: [mlgcctv.com](http://mlgcctv.com)

## **Golf Association**

*LaNell Burgsteden*

The weather was great for the President's Cup on Feb. 10<sup>th</sup>, and it was followed by a very enjoyable meal organized by Joan and Don Young. Brenda McMurray, John McMurray, Mary Bayens, and Curtis Cox produced the best scores that day. The President's Cup will be awarded to our overall winners at the March Hole-in-One. The Men's Senior and Super Senior tournaments are still in progress as I write this due to a rainout on Feb. 13<sup>th</sup>.

The Ladies Senior and Super Senior event will take place late Feb.

The Club Championships will be next, on March 1 - 3, watch for results in the April Accents.

Tickets for the annual dinner dance to be held on Saturday, March 9<sup>th</sup> are currently available.

The GA President Dick Keller was pleased to present a check for \$10 000 at the last HO meeting, an accumulation of fundraisers and 50/50 draws over several years. The donation is expected to be used for final touches on our fantastic new golf course.

The new tee markers, ball washers, signposts, sandbox, etc., look great and I was excited to play the new combo tees. They simply present more options for all golfers. Even the new score cards are an improvement as the pencils write on them much easier and clearer, and even erase better! Please continue to check out the MLGA website at [mapleleafgolfassociation.com](http://mapleleafgolfassociation.com) for lots of good information thanks to Tim Redmond, our website manager.

## Photo Club

*Betsy and Dennis Ausel*

Join us Tuesday, March 5<sup>th</sup> at the Can Am at 7:00 pm. We will have a variety of topics relating to photography, design and editing. Donna Schmader is going to inspire you with tips and ideas for taking great pics for the People's Choice Photo Contest by using your Point and Shoot Camera. Donna has taken several classes in photography and wants to share the tips and techniques she has learned over the years. Keeping it simple is Donna's goal. Donna will also introduce you to a photo editing/graphic design program called Pic Monkey. This program gives you the tools to expand your creativity with your photos.

Phyllis Dalglish will do an overview of the photo editing program Adobe Elements. This program is now available at the computer club and available to photo club members who are also members of the computer club.

Tuesday, Mar 19 will be our last photo outing for the season. We will notify members via email for time and place.

**A REMINDER TO MAPLE LEAF RESIDENTS;** you are invited to submit photographs this season to **The PEOPLE'S CHOICE PHOTO CONTEST** that runs in collaboration with The Arts and Crafts Show. Entries are due by March 15<sup>th</sup>. This season's **theme is "OUR COMMUNITY"** and although we are extending the territory to include Southwest Fla., we would encourage **PHOTOS OF OUR MAPLE LEAF COMMUNITY**. Photos can vary in subject and will be voted on by the residents of Maple Leaf during the Arts and Crafts Show. There is a limit of 4 entries per person. Photo must be 8"x 10" and not matted. We will mat and label when received. Each photo should be labeled on the back with your name, address, phone number, and a title. There will be 1<sup>st</sup>, 2<sup>nd</sup>, 3<sup>rd</sup> and honorable mention ribbons. This year's 1<sup>st</sup> place ribbon will be replaced by The John Asher Memorial Trophy (a trophy that the winner will hold for a year and return for next season's winner).

We will also have subcategories in the topics we covered during our club events. These categories include composition, motion, and close up photography. A team of judges from the Photo Club Board will judge for winners in these areas. Good Luck to all entries! Photos should be delivered to 956A Sherbrooke Crescent **by Mar. 15<sup>th</sup>**



## Line Dancing

*Denise Holland*

Wednesdays, Queensway, Beginner 7 - 7:45 pm, Intermediate 8 – 8:45 pm,

Social Wed. Feb 27, approx. 7:45 pm.

This is the place to practice with likeminded people out for an evening of fun. (bring water, dress lightly it gets warm having fun). Wear name tags if you have them, Thanks.

Hand-outs available - "How to Learn the Steps", Practice in your home. We welcome Experienced dancers at 7 pm to provide **more** feet for our Beginners to watch, and yes, we encourage, Staring, but *only* at each other's feet! LOL

Watch your Instructors perform their skills: Corrine Brownridge, Joan Gibson, Naida Johnson, Lise and Gord Gladman, Dorothy Whitehead, Jeff Papiez and Dee Livingstone throughout the season. Arrive Solo, with Friends, make Friends! Hope to see you soon. Keep the Feet Happy, Dance! Dance! Dance!

## Computer Club

*Denise Holland*

Computer Club Meeting, Monday, March 11, 2019 at the CanAm. 9 AM Coffee, Membership Sign-up, Meeting: 9:30

All are Welcome, Bev Murray will sign up Members Sat. mornings, 9 am -11:30 am at the Computer Club, beside Library.

Cost \$25 for one, \$35 two in same household. We absorb the tax.

NEW MEMBERSHIPS 2019/2020 will be available for sale, March 1. Same prices.

MUST have new memberships April 1 to enter computer club or password protected internet access.

Computer Club is open year-round, 24 hours, weekends, holidays, nights, you got it!

Tired of lugging that laptop between summer & winter residences. Does your printer ink dry out after 6 months of inactivity? Require a scanner? Need help with your devices? Need a shredder? Want to learn how to use that iPad, Tablet or Laptop, navigate your email, Create Photo Albums, Copy/Paste, to name a few activities. Send / Receive Faxes. We have 16 P/C's and 2 Macs'. Drop by and chat with us.

We can help you with all of the above & *more*. Members receive free assistance on Sat. Mornings, (Nov-Mid-March) to answer questions & enhance your skills. Monthly (2nd) Mon. meetings with coffee & presentations Nov - March.

We offer Alternate Tuesdays 1 - 3 pm for Trouble Shooting if you can't make it Saturday mornings.

Next two are: March 5, 19... and then we are packing to head north for a lot of us, WOW!!!

*BEGINNER IPAD I and BEGINNER IPAD II Instructor: Chris Vaughan*

If you are a beginner, or basic, and need more help, call Christine Vaughan, (in directory) she will assess your needs

to determine if you are a candidate for One on One instruction, \$10 for 1 hour, donated back to the Computer Club.

BEGINNER I: Basic, how to turn on, learn the HOME page, where speakers & jacks are move ICONS, & much more.

iPAD II: Learn to save pictures, Photos, send a picture "of a Great Recipe or a favorite grandchild" to your email or library, Cut / Copy / Paste on iPad, sending email, create/edit contacts, use SIRI, and much more.  
Is there Something You Want to learn? Tell us, we will try to accommodate.

Check out: [mapleleafcomputerclub.com](http://mapleleafcomputerclub.com) (no password, we do not enter personal information on our website or the Accent)

The last Computer Trouble shooting will be March 15, 9 - 12 noon.

No Trouble Shooting Saturday, March 23, 30, etc. the club is open, but no directors will be scheduled to be in attendance.

As always be alert to Scams, company's & governments do not receive gift cards for payment, if you didn't order something from UPS, or whomever, don't click on the email to say it wasn't you,

Banks and Apple will not Freeze your accounts, or lock you out, they want your business, only scammers use scare tactics to make you "take action" immediately. Never call the phone number **IN** the email, or click on the **URL** in the email. Call your bank from the number on YOUR card, call the IRS or CRA from your own records, never from the email. Don't be a victim. Stay alert.

Membership provides *so much for so little. Check us out, I believe you will be Glad you did.*

On behalf of the Board of Directors, Have a Great Day! See you about MapleLeaf!

Denise / Barry Holland, Ken / June Morris, Bev Murray, Bill Rudd, Dan Lahaise,

## Duplicate Bridge Club

*Mavis Trivett President*

Please visit our Website for information about our Bridge Club. [www.bridgewebs.com/mapleleafgcc/](http://www.bridgewebs.com/mapleleafgcc/)

We continue to have a very active Duplicate Bridge Club welcoming new members and guests to the group. If you require a partner, please contact Doug Brenner, our partnership coordinator, via our website. We ask members to please let Doug know if you are available to be a spare.

Our Spring Cub Championship was held on February 4. Congratulations to our Club Champions, Ken Facer and Doug Brenner, with a winning 68.15% game. We have two winning pairs claiming our "B" title, they are Dorothy Howat and partner Klazina Palmer, and Katherine Smith partnered by Frank Pring, who were tied with 62.8%. Congratulations to both pairs.

The lesson on Defense given by Joe Potter was very well attended. Now all we have to do is remember, and put to the test, all the great information provided. Thank you, Joe.

Once again, our Pizza Night was a great success with members and guests enjoying a social get together and meal before our evening game. Thank you to Penny Suikki and her marvelous volunteer team.

Our Annual General Meeting will be held on Monday, March 18 at 6 p.m. Election of officers for 2018/19 will be held at this meeting. Please inform Joe Potter if you are interested in serving on the committee. Your attendance is requested. Our regular game will follow the meeting.

All Duplicate Bridge games will be held at the CanAm. Our Monday and Wednesday games start at 6.45 p.m. Dues are \$15, Table Fee is \$1 and Guest Fees are \$3.

Please check Channel 195 for Duplicate Bridge Club Announcements.

## **Garden Club**

*Helping Educate Maple Leaf Homeowners about Florida Flowers and Plants"*

*Norman Harrison, President*

The Garden Club celebrated the 30<sup>th</sup> Anniversary of the Garden Club at the February meeting. The CanAm was set in a festive party setting and cake was served after the presentation. Our presenter was Master Gardener Dolly Tomalinas. Dolly shared a unique and fun presentation about miniature and fairy gardens.

The Pancake Breakfast was a huge success due to the dedication of many volunteers and great food!

Please come join us on March 9<sup>th</sup> for the next meeting of the Garden Club which will follow the Annual Maple Leaf Memorial & Remembrance Service at the Can-Am. New members are always welcome. Meet and Greet coffee and snacks will be held from 8:30 AM until 9:00 AM. The Annual Maple Leaf Memorial & Remembrance Service will begin at 9:00AM. The business meeting will follow the service. Bring your own mug for a door prize ticket.

Please contact Norman Harrison 255.8303 or Jolene Scofield 769.3559 if you need additional information or bring your questions to the meeting. See you there!!

## **2019 Annual Maple Leaf Memorial & Remembrance Service**

The Annual Maple Leaf Memorial & Remembrance Service will be held on Saturday, March 9th at 9:00 AM at the CanAm Center. The Garden Club extends a welcome to all residents, family members and friends who wish to attend. A coffee social will be from 8:30 to 9:00 AM. Musical selections will be led by Rita Jones Robertson with piano accompaniment by Mary Canning. Guest clergy will be Rev. Karen Binding. The Annual Maple Leaf Memorial & Remembrance Service is an acknowledgement of the memorialization of residents or past residents, family members or friends that has been made by a donation to the Beautification Fund. Also, there will be an acknowledgement of any Beautification Fund donations made to honor a personal occasion. The Garden Club Beautification Fund is a living memorial which is used to purchase trees, plants, flowers and shrubs to beautify our park. The fund also assists in the care and maintenance of the many parkettes.

Remember you can memorialize and honor your loved ones for any occasion at any time with a donation to the Maple Leaf Beautification Fund. Envelopes can be picked up in the CanAm Center and at the Main Office. Any questions will be addressed by Mary Donnellan 781.308.9546.

## **Billiard Club**

*Stan Noel, Secretary*

The season has flown by so fast. It is hard to believe we are already into March and by the end of the month many Maple Leaf winter residents will be returning to their summer homes. As the old saying goes, 'Time flies when you are having fun'. We had a busy February with Inter-Club Matches; Tournaments and Couples play.

Inter-Club Matches:

Feb 1, 2019

\*A Team - Maple Leaf 13 wins, Windmill Village 12 wins

\*B Team - Maple Leaf 14 wins, Windmill Village 11 wins

Feb 8, 2019

\*A team - Maple Leaf 28 wins, Isles Yacht Club 22 wins

\*B team - Maple Leaf 26 wins, Isles Yacht Club 24 wins

Feb 15, 2019

\*A team - Maple Leaf 21 wins, Windmill Village 29 wins

\*B team - Maple Leaf 18 wins, Windmill Village 32 wins

Jan 21, 2019 9-Ball Tournament

A Group Winners: Tim Jones and "Butch" Trautman

Runner Up Winners: Ken Hamilton and John Shaw

B Group Winners: Tom Zenisek and Richard Smith

Runner Up Winners: Ron Smith and Stan Noel

C Group Winners: Jim Bayens and Charlie Heckel

Runner Up Winners: Larry Pinto and Jerry Self

Feb 4, 2019 8-Ball Tournament

Winners: Tim Jones and Homer Fournier

Second Place: Brian Thornton and "Butch" Trautman

Third Place: Don Heywood and Joe Szabo

Fourth Place: Ken Hamilton and Jerry Self

Feb 18, 2019 9-Ball Tournament

Gold: 1<sup>st</sup> Place - Don Heywood and Gary Gouthro

Gold: Runner Up – Jim Bayens and Bill Brown

Silver: 1<sup>st</sup> Place – Homer Fournier and Jerry Self

Silver: Runner Up – Tom Zenisek and George Handyside

Bronze: 1<sup>st</sup> Place – Ken Hamilton and Russ Dean

Bronze: Runner Up – Mike Comba and Charlie Heckel

Couples Group:

We continue to have excellent attendance with 10 couples attending on Feb 1<sup>st</sup>. We played a modified version of "straight pool".

Feb 1, 2019 Winners: Bud and Norma Petican. They remain undefeated

Second Place Winners: Mark & Debbie Tamburro and Lindsay & Margie Brennen

On Feb 8, we again had excellent attendance with 11 couples attending. We played Poker Pool.

Feb 8, 2019 Winners: Peter Trivett and Sharon Tkacz. They were undefeated with 5 wins.

The Championship Games as well as the Ladder Games look to be on schedule. All play downs need to be completed by mid-March. Any delayed matches will be forfeited unless arrangements are made with Lindsey Brannen.

## Lawnbowling

*Heather Comba*

If you would like to give the sport a try please contact Heather Comba at [hcomba@comcast.net](mailto:hcomba@comcast.net) and set up a time to meet at the green with one of our coaches.

The summer get-together in Milton Ontario will take place on Tuesday August 13. To register please contact Mike Comba at [mcomba@comcast.net](mailto:mcomba@comcast.net)

Five Tournamants were held since the last accents. Leads and Vices Only, Aussie Pairs, Combo Fours and Super Seniors. Four interclub events were held. One against Sarasota in Maple Leaf, one against Sarasaota in Sarasota, one against SunNFun in SunNfun and one against Kingsgate in Kingsgate.

Tag draws, fixed leagues, inclub and interclub tournamants and socials give bowlers events they can choose from to participate at their level of interest. This sport has something for everyone.



## Natural Resources Committee

*Mike Comba co-chair.*

Thanks to the volunteers who came out and planted the pine tree seedlings. Picture of the nursery below.

This project was possible thanks to funding provided by the Garden Club, Flea Market and Tai Chi.

Kudos to the Sandbar for using biodegradable coffee cups. NRC is also pleased that the Lawn bowling club is looking at using compostable

dishware for its events.

You can help, take home glass and recyclables when you attend group party functions.

Use your own dishware or bring your own coffee mug.

Please visit our page on the Maple Leaf website (<http://mapleleafgcc.net>).

Go to "Our Community" and click on Natural Resources Committee.

Interested in your environmental surroundings. Get involved and join the committee.

## Hole in One

*Sheridan Yetman*

The February Hole in One Social was another great success. We had two golfers with Hole in Ones, they were:

1. Dorothy Turner     Hole # 16     January 24, 2019
2. Keith McGruer     Hole # 13     January 28, 2019

A video was produced for both of these golfers by David Warren and arranged by yours truly. They were truly enjoyed by the large attendance at this social. Both were presented with their Hole in One trophies and certificates. The certificates are produced by our own golf professional, Nathan Wilson.

Our 50/50 produced another fantastic payout of \$290 which was won by Anna Nichols. The ticket was drawn by Cathy Fleiner.

The next Hole in One on the second Wednesday in March which is the 13th at the Queensway Center from 4-6 pm. Memberships at \$20 per person are still available at the door and out of town guests staying with you on the day of this event are welcome at a cost of \$5 per person.

Come along on the 13th of March and mingle with your fellow golfers and enjoy the social.

PLEASE BRING YOUR MEMBERSHIP CARDS FOR ADMISSION AND WEAR YOUR NAME TAGS.

## **Newcomers' Welcome Gatherings**

*Enid Lunt, Chairperson*

The Maple Leaf Newcomers' Welcome Gatherings are held from 10:30 A.M. to approximately noon in the Country Club three times a season one week after the Homeowners meetings in the months of November, January and February.

Our aims are to provide an informal setting where Newcomers, both homeowners and renters, can meet and chat with each other, receive information about the Park and the greater community, and get answers to any questions that may have come up as they make their transition into our park and its lifestyle.

This past season our committee consisting of Dale Houghton, Phyllis Poirier, Eden Wells, Myretta Anderson, Sharon Keyes, Gayle Neff, Kris Palmer, and myself have hosted 112 participants. From their comments, the Newcomers' Welcome Gatherings continue to be a valued venue.

Thank you to all involved in making these Gatherings the success they are.

Our next Gathering will be on Monday November 18 at 10:30 A.M.  
Mark your calendars and pass it on!

## **Arts & Crafts Club**

*Carol Hebert 258-8924*

It is hard to believe we are already planning our General Annual Meeting, Appreciation Dinner and of course, our Famous Arts & Crafts Show. Reserve time during the March 22 and 23 weekend to visit our exhibits. Our students, teachers and especially our show convenor, Barb Braithwaite, and her team have been hard at work to present the best of the best Arts & Crafts Show.

Our 319 members are always very proud to show off their creations. This year's show offers raffles galore, a Jelly bean contest, a fashion show and exquisite exhibits in both the CanAm and Queensway Buildings. The Woodworkers will again join our club. You are also invited to visit their shop to admire their creations. Don't forget to bring your wallet...you might want to bid on a favorite or try your luck on the Jelly bean basket of goodies.

A reminder to all members that our General Annual Meeting is March 14 at 3:30 pm at the Rampart Center.

## Library

*Linda Zakikian*

Years almost over and you'll be heading home. Before you do please return all books you have out. We seem to be missing quite a few large print books. We also could use newer large prints. Could you go through your books at home and bring back some large print or maybe purchase one or two from your used book stores. Thank you and safe travel.

## Maple Leaf Tennis Club – *Greg Freeman*

### Tennis Court Improvements – Lindsay Brannen

There continue to be improvements made in and around the tennis courts.

- The Charlotte and CanAm benches have all been painted green
- The Bulletin Board at the CanAm courts has been rebuilt
- Temporary notices have been posted on the CanAm and Charlotte courts indicating the location of First Aid kits in the event of accidents. Permanent First Aid kit signage will be included this spring.
- The new drain on the south end of the Charlotte Courts has been painted as have the water coolers
- A CanAm lights on the Tennis Courts have been cleaned, re-aimed and the lamps have been replaced, making a significant difference and improvement for night play.

All of these projects were made possible by the many volunteers who donated their time and expertise to improve our facilities.

### Tennis Pro Exhibition Match – Lindsay Brannen

Mark your calendars! On March 16<sup>th</sup> there will be a Tennis Pro Exhibition Match at the CanAm Courts at 2:00 PM. Don't miss out. The demonstration will be free and there will be a BBQ after the match. Tickets for the BBQ are \$5.00 and will be on sale during the Men's Doubles Tournament, Saturday, February 23 at the Charlotte Courts. Tickets will also be on sale at the Exhibition Match on March 16, but having tickets pre-sold would give us a good idea of how much food to order. It will be a fun afternoon, so come out and be inspired and entertained by the pros.

### Tournament News – Women's Doubles – Gary Reid

The Women's Doubles Tournament was played on January 26<sup>th</sup>. Despite the miserable cold weather, we fielded 9 teams. The A-Flight winners were Eileen Payne and Bonnie Johnston. The B-Flight winners were Lorette Pinto and Karen Van Leeuwen. Our thanks go out to Dick Keller and Gary Croskey for umpiring the final matches and to Harry Durrant for taking the photos. The next tournament will be the Men's Doubles on February 23<sup>rd</sup> and our last Tournament will be the Maple Leaf Cup, to be played on March 16, with 8 teams featuring teams of 8 players. It is truly a celebration of tennis at Maple Leaf, culminating with the Tennis Pro Exhibition match and the end of season BBQ.

### Tournament News – Novice – Greg Freeman

The Maple Leaf Novice Tournament was held on Saturday, Feb 16<sup>th</sup>, with 8 participants who all came through the 'introduction to tennis' program at Maple Leaf – The Taste of Tennis – run by Keith and Nancy McGruer. Over 325



people have participated in the "Taste of Tennis" program in the past 14 years. Many current team players came into tennis through this program. The next opportunity to participate will be in November 2019

The winners of the Novice Tournament were **Arlis Wood and A.J. Benoit**. The winner of the consolation round was **Liv Myran**. Congratulations to all of the participants and we hope that this is the beginning of many wonderful and fun years playing tennis at Maple Leaf. It was terrific to see so many spectators cheering for the players during the tournament.

#### **Pot Luck Dinner – Betty Staples**

We all had a wonderful time. Our thanks to the 2.5 and B5 for all their work, it was so well run. The food was fantastic as always.

#### **Presidents Dinner Dance – Betty Staples**

On Friday, Feb 15<sup>th</sup>, the Queensway was transformed to feature "An Evening in Italy" in celebration of the Tennis Club's President's Dinner and Dance. It was a huge success: the food, music, decor and the cocktail party were all well received. The raffle prizes were just wonderful – of course, many thanks to those who donated for their generosity. Thanks so much to Betty Staples and her committee for months of preparation and all the hard work. What a fantastic team! Thanks as well to B5 Platinum for the huge effort to assist in setting up the Queensway. Many people worked hard to make the evening a success. It was truly magical – la dolce vita!

#### **AGM**

The AGM is coming up March 20th from 2:00 till 4:00pm. Please mark the date. Directors will present their annual reports, tournament trophies will be awarded and the 2019-20 executive will be elected.

#### **Membership – Peter Murphy**

Its not too late to join the MAPLE LEAF TENNIS CLUB. Join the club now and your dues will be applied to the 2019-20 season.

In addition, we formed a committee to investigate on-line tennis court booking. If you are a Golf member you are familiar with an on-line booking system. The majority of tennis clubs in the area are no longer using manual booking systems. We reviewed 3 options and are considering **Giga Sports** as our best option, if its decided to proceed. They manage Tennis Clubs across Canada. No decision has yet been made. We are looking for feedback from our membership. If you have used Giga Sports or another on-line booking system, your contribution would be more than welcome. If anyone has questions or more information please e-mail: [mltcmembership@gmail.com](mailto:mltcmembership@gmail.com)

## **Thank You(s)**

### **Fire Club**

*Don Sabin*

The officers and members of the fire club want to take this opportunity to thank the volunteers for assisting the club with its annual spaghetti dinner. With over 1,000 tickets sold the dinner could not be a success without their assistance. Again, thank you.

The club is updating and reviewing our current projects and looking into new projects for the future. One would be surprised at the cost of maintaining and servicing our current projects.

## **2019 Garden Club Pancake Breakfast**

Norman Harrison, Mike Comba, Peg Dwyer – Co-Chairpersons

Thank you to all volunteers who helped to make our annual Pancake Breakfast a success. The proceeds will be returned in our efforts to beautify the Park, open spaces and parkettes. Look around the Park that you have helped! Whether you were a greeter, a ticket taker, a ticket seller, or a hostess. Whether you helped at take out, or were a trash remover, a kitchen helper, a coffee/tea maker, server or a shopper. Whether you were a juice and syrup server, did table set up and reset, or were a floor server, a cook or helped with the kitchen cleanup. Thank you! Extra thanks to Wade Osborne and his crew in the hall set up, and others who helped with the set up and break down of tables and restacking chairs. A special acknowledgement to the Fire Club and Communications as well as Rick Hull for security and traffic flow. Also, thanks to Nancy and Mr. Ed at the Sand Bar and Linda and Debby in the Park Office. All of your efforts did not go unnoticed!

## **Valentine Dance Committee**

The Valentine Dance on February 8th at the Queensway was a great success. Thanks again to the committee of Lise and Gerry Nadon, Brenda and Werner Eichberg and Francine and Rejean Prevost for their work and to Sharon McDonald for the decorations.

Brenda and Steve Lance

## **CPR/AED REFRESHER COURSE**

Thanks to all the people who attended the CPR/AED refresher course. Your time and effort in attending makes Maple Leaf a better place to live for us all.

Brenda Lance and Lynn Jenkins

## **From the Frank Cynkar Family**

We would like to thank all of our wonderful Maple Leaf friends for the kind words, prayers, flowers and cards during our father's illness and passing. We had no idea when he bought his house in Maple Leaf in 1980, that the park would have such a tremendous impact on all of our lives. Our children and now our grandchildren all view Maple Leaf as their own "paradise"!

Love,

Barbara and Greg Craycraft, Paul and Maribeth Cynkar, John and Marilyn Cynkar, Betsy and Dennis Ausel,

Tom and Barb Cynkar

## **Deaths**

Jan. Francis Cynkar #952  
James Lewis #719

Feb. Marguerite Cole #759  
Bob Cottingham # 986  
Ralph Veigel – Formerly of #520  
Auriel Fleming – Formerly of #313

# March 2019

Check channel 195 for changes/additions

Sunday

Monday

Tuesday

Wednesday

Thursday

Friday

Saturday

					<b>1</b> Merry Makers Show CC	<b>2</b> Merry Makers Show CC
<b>3</b> Merry Makers Show CC	<b>4</b> Homeowners Meeting 9:30 Q  Merry Makers Show CC	<b>5</b>	<b>6</b> Movie Night (I can Only Imagine) CC 7P	<b>7</b> Mardi Gras in the Park 2-7 Sundeck	<b>8</b> Celebrity Series CC 7P Singers Concert Q 7:30	<b>9</b> Garden Club 8:30 CA  Golf Dinner/Dance Q 5:pm
<b>10</b> Shuffleboard party on the deck 2pm Rounders 4:15 CA  Singers Concert Q 3P	<b>11</b> Computer Club 9-11 CA (Latin Cardio Cancelled) Karaoke 5-8 CC Singers Concert Q 7:30	<b>12</b>	<b>13</b> Strawberry Festival 2-4 CA Hole in One 4-6 Q  MOVIE NIGHT 7pCC(Bohemian Rhapsody)	<b>14</b> Wings & Things CC (Brett Baker)	<b>15</b>	<b>16</b>
<b>17</b> AGM Shuffleboard 11am CA St Patrick's Parade  CC entertainment 1-3 Irish Martin	<b>18</b>	<b>19</b> Ladies Golf Luncheon	<b>20</b>	<b>21</b> Wings & Things 4:30-8 CC (Two of a Kind)	<b>22</b>	<b>23</b> Arts and Crafts Show CA,Q  Buffet and entertainment CC (Jerry Connolly)
<b>24</b> Arts and Crafts Show CA,Q	<b>25</b> Karaoke 5-8 CC	<b>26</b> Ladies Golf Final Day-Fun Day	<b>27</b>	<b>28</b> Wings & Things 4:30-8 CC (Diversity)	<b>29</b>	<b>30</b> No Computer troubleshooting
<b>Weekly Activities</b> 7:15-8:30AM Exercise with weights CA & Deck 7-9 Bridge C	8:30 Latin Cardio Exercise CA 9:30 Book & Film Club C 12:30-4PM Keyboard Q 6:30-9:30 ML Singers Q 6:30-10 Dup. Bridge CA 7-9:30PM Euchre C	9-10AM Exercise with weights C 9AM Keyboard Practice Q Bocce 1pm 3:30 Yoga Ballroom Dance 2:30-4 CA 6:30 SQ dance rounds Q 7:30 SQ Beginners Q  7 pm Pinochle C Happy Hour 3-8 CC	7:15-8:30 Weights Class CA & Deck 9:00 Latin Cardio Exercise CA Yoga Adv. 10:30-12Q 1PM Ladies Bridge CA 1pm SQ Dance Workshop Q 6:30 Cribbage C 6:30 Dup Bridge CA 6:30 Cards & Games C 7PM Euchre SB 7-9PM Line Dance Q	9-10:30AM Yoga Q 9-10 Exercise with weights C 9A SQ Dance DBD CA Creative Writing 9-11CC #3 11 SQ Dance Mainstream CA 7-10 Bingo CA  Wings & Things 4-7 CC	8:30 Latin Cardio Exercise CA 8:45-10:15Yoga Q 10:30-12 Yoga Adv. Q 10:30-11:45 Tai Chi CA 1PM SQ Advanced CA 3PM SQ Dance Weekly Dance CA 7PM Bid Euchre CA	12:30 pm Duplicate Bridge CA  9-12 Trouble shooting at the Computer Club

## **PREPARING TO CLOSE YOUR “MANUFACTURED” HOME**

The following are a set of suggested reminders as you prepare to close your manufactured home for the summer.

1. Flush toilets multiple times to clear sewer line.
2. Turn off the taps in both bathrooms – toilets as well as sinks.
3. Turn off taps to kitchen sink and to the dishwasher.
4. Clean refrigerator, freezer, and stove. Leave doors ajar.
5. Put saran wrap over toilet bowls and toilet tanks.
6. Disconnect propane tank from BBQ and put plastic plug over threaded pipe.
7. Set thermostat at 80 and humidistat at 50. Set thermostat to automatic and cool.
8. Apply car wax to new washers & dryers. Open washer and dryer doors.
9. Close all south and west facing blinds and curtains.
10. Cover furniture and lamps.
11. Open cabinet drawers and closets to let air circulate.
12. Leave clean bags in vacuum cleaner(s).
13. Disconnect cable from TV and stereo systems.
14. Unplug TV's, radios, and all appliances.
15. Turn off hot water heater and turn off tap for incoming water.
16. Turn water off at outside valve and remove handle. CCU can turn off at meter.
17. Turn off circuit breakers to house except for a/c unit and alarm system.
18. Turn off power to shed.
19. Remove batteries from remotes, clocks, flashlights, etc.
20. Clean or replace a/c air filter.
21. Coat garbage disposal with vegetable oil.
22. Clean bicycles and turn them upside down in shed or house.
23. Lock all windows in the air conditioned section of home.
24. Open two lanai windows 1" when area is not air conditioned.
25. Leave shed window ajar.
26. Turn off the taps to the washer in shed and unplug washer and dryer.
27. Lock shed.
28. Put lanai furniture inside the air conditioned home.
29. Clean gutters.
30. Leave nothing outside that could become a flying object in a hurricane or storm.
31. Remove all fruit from citrus trees.
32. Ask a neighbor, friend, or other person to check home weekly or after a storm.

